

Stonesoft™ Domains

October 2011

Centralized Management of Several Customer Environments

Domains allow Managed Security Service Providers (MSSPs) to easily manage different customer environments with a single Management Server. Traditionally, MSSPs are challenged by the administration and costs of managing multiple servers for each domain. Now configurations can be shared across domains, and administrators can quickly make configuration changes or reuse configurations. The unique architecture of the Stonesoft Domain solution simplifies MSSP environments, making them easier to maintain.

With the Stonesoft Domain solution, administrators can make sure customers' elements never get mixed up. Administrators' responsibilities can also be accurately defined, and access can be limited to only the Domains they control. MSSPs can also provide their customers additional services by giving them reliable and light-weight Web Portal access to reports, policy configurations, and logs.

Domains also simplify the network environment significantly. Customer environments remain clean and easy to manage, decreasing the risk of human error. There is no need to see thousands of network elements if they are irrelevant for the context currently being managed. For this reason, Domains are a useful feature not only for MSSPs, but also for large enterprises. Administrators can split distributed environments into Domains and keep the environment well organized and easier to manage.

STONESOFT

Stonesoft™ Domains Specifications

DOMAINS

Specifications

Max Number of domains	200
Number of Administrators	Unlimited
Number of Managed Devices per Domain	Unlimited
Number of Elements per Domain	Unlimited

FEATURES

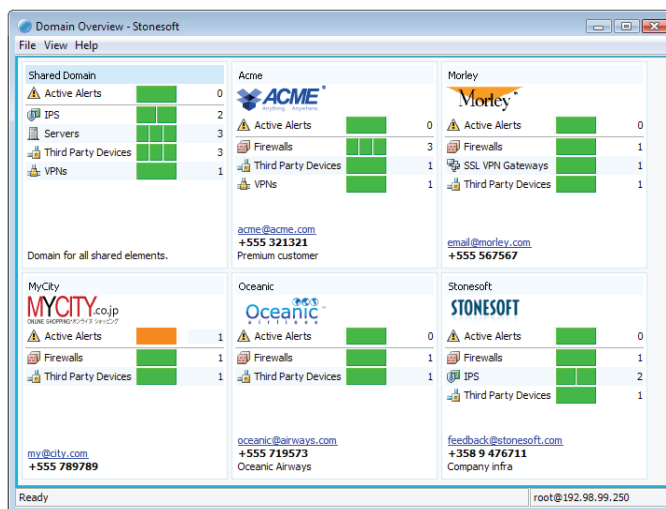
Configuration Separation	Isolate the customer environments to different domains and make sure that customers' elements never get mixed up
Access Control	Configure the administrators' visibility and responsibilities with the help of domains
Monitoring	Monitor the status of all granted domains with the help of Domain Overview
Customization	Customize the PDF style templates
Configuration Sharing	Share elements such as policy templates for all domains
Migration Tools	Move elements between domains with integrated Move to tool
Import/Export	Import and export elements between different SMC installations and domains

SUPPORT

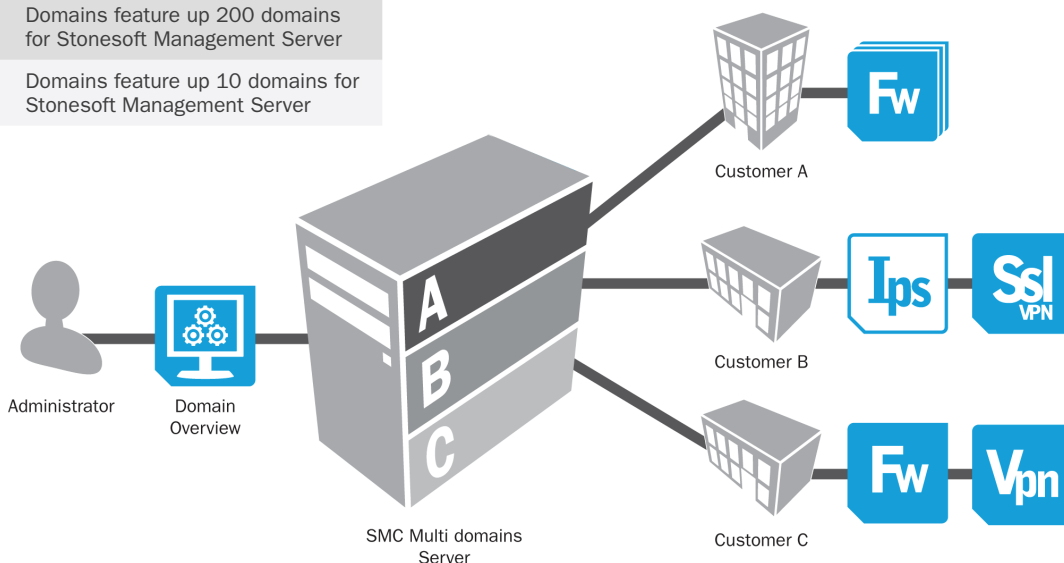
Premium Support	24/7-call logging via web, email and phone, two hour response time, software updates
Basic Support	8/5-call logging via web, email and phone, next business day response time, software updates

Product codes

LIC-SG-DOMAIN-200	Domains feature up 200 domains for Stonesoft Management Server
LIC-SG-DOMAIN-10	Domains feature up 10 domains for Stonesoft Management Server



The Domain Overview summarizes the status of all customer environments that have been granted to the administrator. In this view the administrator can see at a glance whether all engines are online, and whether there are new alerts in any customer environment they are responsible for. Double-clicking a Domain in the Domain Overview opens a Management Client that contains only the elements and logs that belong to the selected Domain. Administrators can be logged into several Domains simultaneously.



STONESOFT